

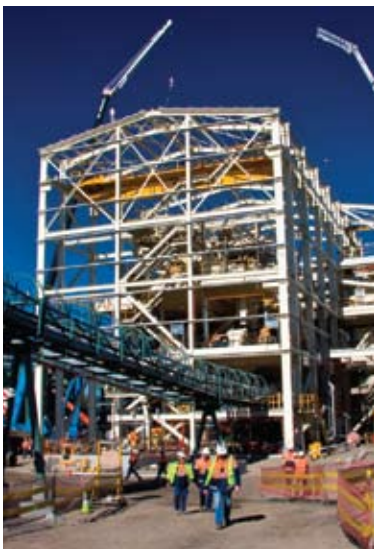
HMA Greenbank Product Support, Field Installation and Maintenance Services provides onsite support to our customers'.

Our services include:-

Installation

- Installation of HMA Greenbank designed pipes, cyclones and chutes
- Upgrade of existing ceramic systems
- Removal and replacement of cyclones
- Installation of pipe hangers, supports and brackets to meet the HMA Greenbank designed pipe
- Installation of valve assemblies including the setting of proximity switches
- Supply and installation of the HMA Greenbank safety GT split Coupling sizes ranging from DN100-DN650

We offer our customers outstanding onsite service that reduces operating costs and forced outages.



Maintenance

- Repair of pipework ensuring correct bore sizes are maintained and ceramic selection is suitable for the duty
- Rotation of pipework to ensure longevity of the pipe, thus keeping maintenance and supply costs to a minimum
- Repair of cyclones using ceramic material to extend operating life.
- Fast repair using the Greenpatch wear-resistant trowlable ceramic
- Repair of chutes
- Maintenance and refurbishment of pumps

Methods

All work is carried out by factory trained tradespeople under HMA Greenbank supervision to ensure that the repair work is carried out to HMA Greenbank quality control standards.

The ceramic is cut to the required shape using the 'diamond blade' saw technique to ensure proper fit. Appropriate adhesives are used to ensure the bond of ceramic to its substrate is to its optimum design strength.

For the refurbishment and repair of existing pipe work, chutes, cyclones and specialised equipment we have available ex stock a wide variety of wear resistant ceramics which include:-

- Basalt
- Basalux
- Alumina
- Alumax Gold
- ABSC
- Sitech
- Weartech
- Greenpatch
- Weartech



Inspection and Condition Monitoring

The new and unique Pipescan service will detect and measure subtle changes to the internal pipe diameter due to wear. Using an internal diameter measuring probe and video camera we can quickly and accurately measure and quantify pipe wear. This enables us to predict life of the pipework and determine which pipes that need to be changed to minimise unplanned plant outages due to pipe failure.



HMA Greenbank Product Support, Field Installation and Maintenance Services personnel are supported by a comprehensive fully equipped workshop with direct access to the design and manufacturing facility. We offer our customers outstanding service that reduces operating costs and forced outages.

Product Support, Field Installation and Maintenance Services

